



# **LABSUN SELECTION**

**Intelligent Integration Pure Water/High Pure water/Ultrapure Water System**



### Lab Water Solutions - Application Area

- HPLC、UPLC、LC-MS
- ICP-MS、ICP-AES、AAS、GC-MS
- MALDI-TOF-MS、IC、TOC analysis
- Electrochemical, spectrophotometric determination
- Preparation of buffer media and reagents
- Cell culture, PCR, IVF
- Protein purification, electrophoresis, biochemistry
- Proteomics, genomics, immunoassay
- Feed water of laboratory instruments, such as: autoclave, bottle washing machine, environmental test chamber, water bath, etc.

## Masterpiece of Breakthrough & Innovation



## Intelligent Integration Pure Water/ High Pure Water/Ultrapure Water System

### X Flagship series

X series, using the innovative intelligent human-computer interactive control system and 7-inch colorful capacitive touch screen, integrating functions of Internet of Things (IOT) and cloud platform, embedding new purification cartridges with patented structure, rigorous double RO system<sup>[1]</sup>, advanced EDI module<sup>[2]</sup> and DI ion-exchange cartridges with larger capacity, equipping with professional-grade pure water tank with 60-liter and HiDis water dispenser arm, can meet your critical and professional application requirements of lab pure water.

System output ranges from 10 to 60 liters/h. It can simultaneously produce ultrapure water (18.2MΩ.cm), high pure water (>17.5MΩ.cm) and pure water (<5μs/cm)<sup>[3]</sup>. The quality of pure water fully meets or exceeds the requirements of water quality standard specified by ASTM D1193-06, GB/T 11446.1-2013, GB/T 33087-2016, GB/T 6682-2008, CP, EP, USP, JP, CAP, CLSI, etc.

<sup>[1]</sup> The double RO system is only used for XUS/XUE series products.

<sup>[2]</sup> EDI module is only used for XUE series products.

<sup>[3]</sup> XUS/XUE series products can produce double RO water (<5μs/cm).

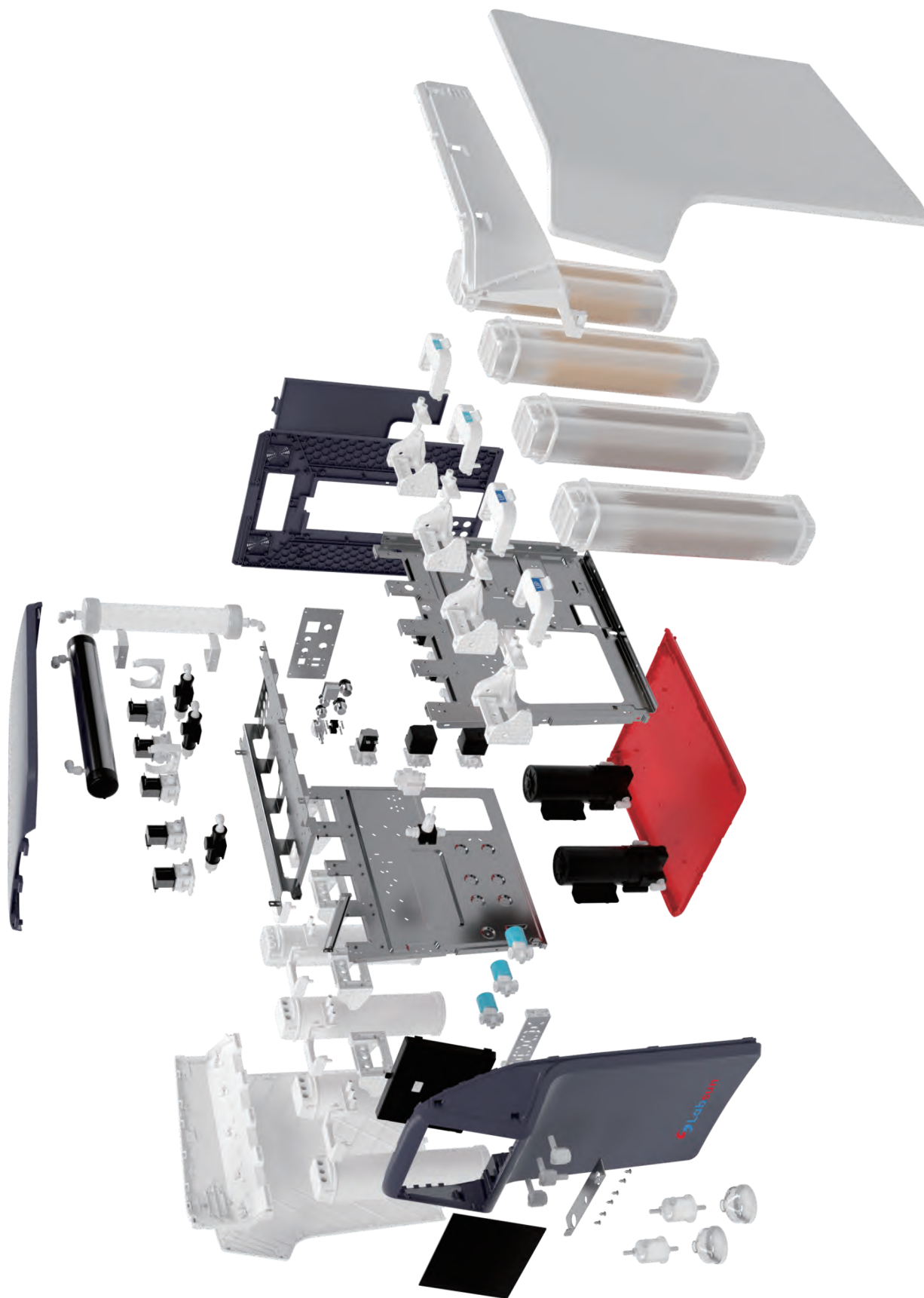
#### Product Series

- XU Intelligent Integration Ultrapure Water System  
[Ultrapure water, high pure water, and RO1st water | 20、40、60 liters/h]
- XUS Intelligent Integration Ultrapure Water System  
[Ultrapure water, high pure water, and RO2nd water | 13、25 liters/h]
- XUE Intelligent Integration Ultrapure Water System  
[Ultrapure water, EDI water, and RO2nd water | 10、20 liters/h]

## Ordering information

	Item No.	Description		
	Host	XU-20	Intelligent integration ultrapure water system,20L/h, Standard, Ultrapure water, high pure water, and RO <sup>1st</sup> water	
XU-40		Intelligent integration ultrapure water system,40L/h, Standard, Ultrapure water, high pure water, and RO <sup>1st</sup> water		
XU-60		Intelligent integration ultrapure water system,60L/h, Standard, Ultrapure water, high pure water, and RO <sup>1st</sup> water		
XU-20UV		Intelligent integration ultrapure water system,20L/h, Low TOC, Ultrapure water, high pure water, and RO <sup>1st</sup> water		
XU-40UV		Intelligent integration ultrapure water system,40L/h, Low TOC, Ultrapure water, high pure water, and RO <sup>1st</sup> water		
XU-60UV		Intelligent integration ultrapure water system,60L/h, Low TOC, Ultrapure water, high pure water, and RO <sup>1st</sup> water		
XU-20UF		Intelligent integration ultrapure water system,20L/h, Eliminating endotoxin, Ultrapure water, high pure water, and RO <sup>1st</sup> water		
XU-40UF		Intelligent integration ultrapure water system,40L/h, Eliminating endotoxin, Ultrapure water, high pure water, and RO <sup>1st</sup> water		
XU-60UF		Intelligent integration ultrapure water system,60L/h, Eliminating endotoxin, Ultrapure water, high pure water, and RO <sup>1st</sup> water		
XU-20UVF		Intelligent integration ultrapure water system,20L/h, Synthesizing, Ultrapure water, high pure water, and RO <sup>1st</sup> water		
XU-40UVF		Intelligent integration ultrapure water system,40L/h, Synthesizing, Ultrapure water, high pure water, and RO <sup>1st</sup> water		
XU-60UVF		Intelligent integration ultrapure water system,60L/h, Synthesizing, Ultrapure water, high pure water, and RO <sup>1st</sup> water		
XUS-13		Intelligent integration ultrapure water system,13L/h, Standard, Ultrapure water, high pure water, and RO <sup>2nd</sup> water		
XUS-25		Intelligent integration ultrapure water system,25L/h, Standard, Ultrapure water, high pure water, and RO <sup>2nd</sup> water		
XUS-13UV		Intelligent integration ultrapure water system,13L/h, Low TOC, Ultrapure water, high pure water, and RO <sup>2nd</sup> water		
XUS-25UV		Intelligent integration ultrapure water system,25L/h, Low TOC, Ultrapure water, high pure water, and RO <sup>2nd</sup> water		
XUS-13UF		Intelligent integration ultrapure water system,13L/h, Eliminating endotoxin, Ultrapure water, high pure water, and RO <sup>2nd</sup> water		
XUS-25UF		Intelligent integration ultrapure water system,25L/h, Eliminating endotoxin, Ultrapure water, high pure water, and RO <sup>2nd</sup> water		
XUS-13UVF		Intelligent integration ultrapure water system,13L/h, Synthesizing, Ultrapure water, high pure water, and RO <sup>2nd</sup> water		
XUS-25UVF		Intelligent integration ultrapure water system,25L/h, Synthesizing, Ultrapure water, high pure water, and RO <sup>2nd</sup> water		
XUE-10	Intelligent integration ultrapure water system,10L/h, Standard, Ultrapure water, EDI water, and RO <sup>2nd</sup> water			
XUE-20	Intelligent integration ultrapure water system,20L/h, Standard, Ultrapure water, EDI water, and RO <sup>2nd</sup> water			
XUE-10UV	Intelligent integration ultrapure water system,10L/h, Low TOC, Ultrapure water, EDI water, and RO <sup>2nd</sup> water			
XUE-20UV	Intelligent integration ultrapure water system,20L/h, Low TOC, Ultrapure water, EDI water, and RO <sup>2nd</sup> water			
XUE-10UF	Intelligent integration ultrapure water system,10L/h, Eliminating endotoxin, Ultrapure water, EDI water, and RO <sup>2nd</sup> water			
XUE-20UF	Intelligent integration ultrapure water system,20L/h, Eliminating endotoxin, Ultrapure water, EDI water, and RO <sup>2nd</sup> water			
XUE-10UVF	Intelligent integration ultrapure water system,10L/h, Synthesizing, Ultrapure water, EDI water, and RO <sup>2nd</sup> water			
XUE-20UVF	Intelligent integration ultrapure water system,20L/h, Synthesizing, Ultrapure water, EDI water, and RO <sup>2nd</sup> water			
Cartridge	Item No.	Description	Item No.	Description
	HPC101	Pretreatment cartridge A	HPC601	UP cartridge, standard
	HPC102	Pretreatment cartridge B	HPC602	UP cartridge, Low TOC
	HPC302	RO <sup>1st</sup> module S2	HPC700	Air filter for tank
	HPC304	RO <sup>1st</sup> module S4	HPC703	185nm & 254nm double wavelength UV lamp
	HPC306	RO <sup>1st</sup> module S6	HPC702	254nm UV lamp
	HPC303	RO <sup>1st</sup> module F3	HPC709	UF ultrafiltration module
	HPC305	RO <sup>1st</sup> module F5	HPC801	TF terminal microfilter
	HPC403	RO <sup>2nd</sup> module D3	HPC802	TF terminal microfilter
	HPC405	RO <sup>2nd</sup> module D5	HPC810	UF terminal ultrafilter
HPC501	DI cartridge			
Accessory	Item No.	Description	Item No.	Description
	TANK1061	60L PE pure water tank incl. air filter & level control	PWA7011	R5 cartridge for pretreatment filter (5 µm, 10 inch)
	TANK1121	120L PE pure water tank incl. air filter & level control	PWA7012	R5 cartridge for pretreatment filter (10 inch)
	DISP2000	HiDis dispenser arm, equipped with 2M connection kit	PWA7501	Foot switch
	PWA7200	Automatic water softener	PWA7502	External leak sensor
PWA7010	Pretreatment filter for source water	PWA1301	Wall-mounted mounting bracket for XLE	
Service	Item No.	Description	Item No.	Description
	HP551001	1-year extended warranty (excluding consumables)	HP559001	1-year, one-price all-inclusive maintenance agreement, including regular consumables replacement, maintenance and calibration
	HP551003	3-year extended warranty (excluding consumables)		
	HP552001	Verification documents in English	HP559003	3-year, one-price all-inclusive maintenance agreement, including regular consumables replacement, maintenance and calibration
HP553001	Basic verification service			

\*On the basis of mutual confirmation of pure water consumption and feed water quality.



# Intelligent Ultrapure Water System

## P Pursuit series

P series, using the innovative intelligent human-computer interactive control system and, 7-inch colorful capacitive touch screen, integrating functions of Internet of Things (IOT) and cloud platform, embedding new purification cartridges with patented structure and DI ionexchange cartridges with larger capacity, equipping with powerful HiDis water dispenser arm, can meet your critical and professional application requirements of lab pure water.

With pure water inlet<sup>[1]</sup>, system output: up to 2 liters/minute. It can produce ultrapure water (18.2MΩ.cm). The quality of pure water fully meets or exceeds the requirements of water quality standard specified by ASTM D1193-06, GB/T 11446.1-2013, GB/T 33087-2016, GB/T 6682-2008, CP, EP, USP, JP, CAP, CLSI, etc.

<sup>[1]</sup>The double RO system is only used for XUS/XUE series products.



### Ordering information

Host	Item No.	Description		
	PU	Intelligent ultrapure water system, up to 2 liters/minute, Standard, Ultrapure water		
PU-UV	Intelligent ultrapure water system, up to 2 liters/minute, Low TOC, Ultrapure water			
PU-UF	Intelligent ultrapure water system, up to 2 liters/minute, Eliminating endotoxin, Ultrapure water			
PU-UVF	Intelligent ultrapure water system, up to 2 liters/minute, Synthesizing, Ultrapure water			
Cartridge	Item No.	Description	Item No.	Description
	HPC601	UP cartridge, standard		
	HPC602	UP cartridge, Low TOC		
	HPC703	185&254nm double wavelength UV lamp		
	HPC709	UF ultrafiltration module		
	HPC801	TF terminal microfilter		
Accessory	Item No.	Description	Item No.	Description
	TANK1061	60L PE pure water tank incl. air filter & level control		
	TANK1121	120L PE pure water tank incl. air filter & level control		
	DISP2000	HiDis dispenser arm, equipped with 2M connection kit		
	PWA7501	Foot switch		
	PWA7502	External leak sensor		
Service	Item No.	Description	Item No.	Description
	HP551001	1-year extended warranty (excluding consumables)	HPS59001	1-year, one-price all-inclusive maintenance agreement, including regular consumables replacement, maintenance and calibration
	HP551003	3-year extended warranty (excluding consumables)		
	HP552001	Verification documents in English	HPS59003	3-year, one-price all-inclusive maintenance agreement, including regular consumables replacement, maintenance and calibration
HP553001	Basic verification service			

\*On the basis of mutual confirmation of pure water consumption and feed water quality.



# **Labsun GmbH**

Am Sandfeld 13a  
76149 Karlsruhe, Germany

Web: [www.lab-sun.de](http://www.lab-sun.de)

Email: [info@lab-sun.de](mailto:info@lab-sun.de)

Tel: +49 (0)721 47080525

Fax: +49 (0)721 47080537