



# **LABSUN SELECTION**

**Air purification fume hood/Protective cover for Balance  
Customized instrument enclosures and walk-in fume hood**

## Air purification fume hood

### AFH900

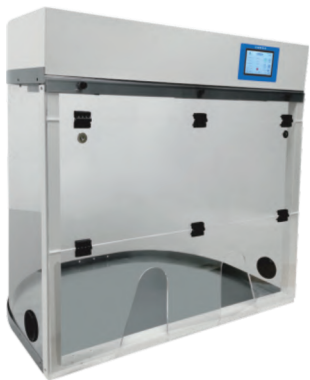
It can be added at any time, providing safety protection for various daily experiments and instrument operations on the experimental platform, and its protective effect far surpasses traditional fume exhaust.



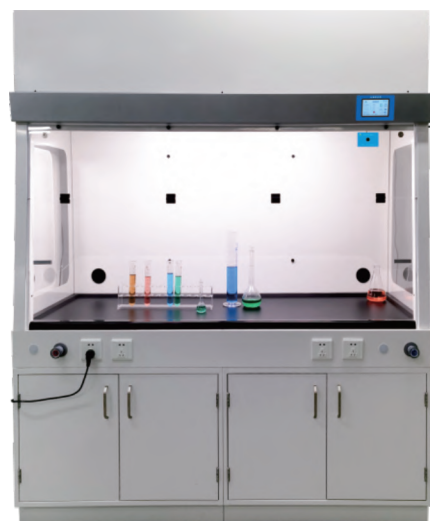
#### Features

- 5" medical grade professional high-definition touch screen
- Flexible and can be added to the experimental platform at any time
- Real time monitoring of filtration efficiency, surface wind speed, temperature and humidity
- Can be placed directly on the experimental platform

Model	AEH 900	AFH 900	AFH 1302	AFH 1503	AFH 1804
External dimensions Length(mm)	900	900	1300	1500	1800
Air volume treatment(m <sup>3</sup> /h)	210	230	420	630	840
Filter module columns	1	1	2	3	4



AEH 900 (Teaching funds)  
360° arc transparent back panel



AFH 1804

## Protective cover for Balance

### AWF900

High potency active pharmaceutical ingredient ,HPAPI weighing(OEB 5)and to meet high-precision weighing requirements while providing safetyprotection.

Model	AWF 900	AWF 1302
External dimensions Length(mm)	900	1300
Air volumn treatment(m <sup>3</sup> /h)	230	420
Filter module columns	1	2



#### Features

- The horizontal airflow mode, as well as the design of the back panel intake airflow, not only facilitates stable balance readings but also avoids the risk of toxic substances falling off when replacing the prefilter and HEPA filters
- 5" medical grade professional high-definition touch screen
- Real time monitoring of filtration efficiency, pressure difference, temperature and humidity
- Comply with OEB5 requirements while ensuring stable reading of high-precision balance weighing
- Intelligent touchscreen operating system

## Customized instrument enclosures and walk-in fume hood

For the protection of chemical volatiles generated during the operation of big instruments and equipment, customizable! Design of up and down sliding doors for easy operation.

Model	AIH 1302	AIH 1502	AIH 1803	AWIH 1502	AWIH 1803
External dimensions Length(mm)	1300	1500	1800	1500	1800
Air volumn treatment(m <sup>3</sup> /h)	460	460	690	460	690
Filter module columns	2	2	3	2	3



AIH 1502 desktop



AWIH 1502 floor type  
(floor standing type)



# **Labsun GmbH**

Am Sandfeld 13a  
76149 Karlsruhe, Germany

Web: [www.lab-sun.de](http://www.lab-sun.de)

Email: [info@lab-sun.de](mailto:info@lab-sun.de)

Tel: +49 (0)721 47080525

Fax: +49 (0)721 47080537